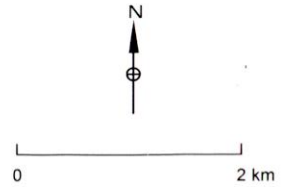
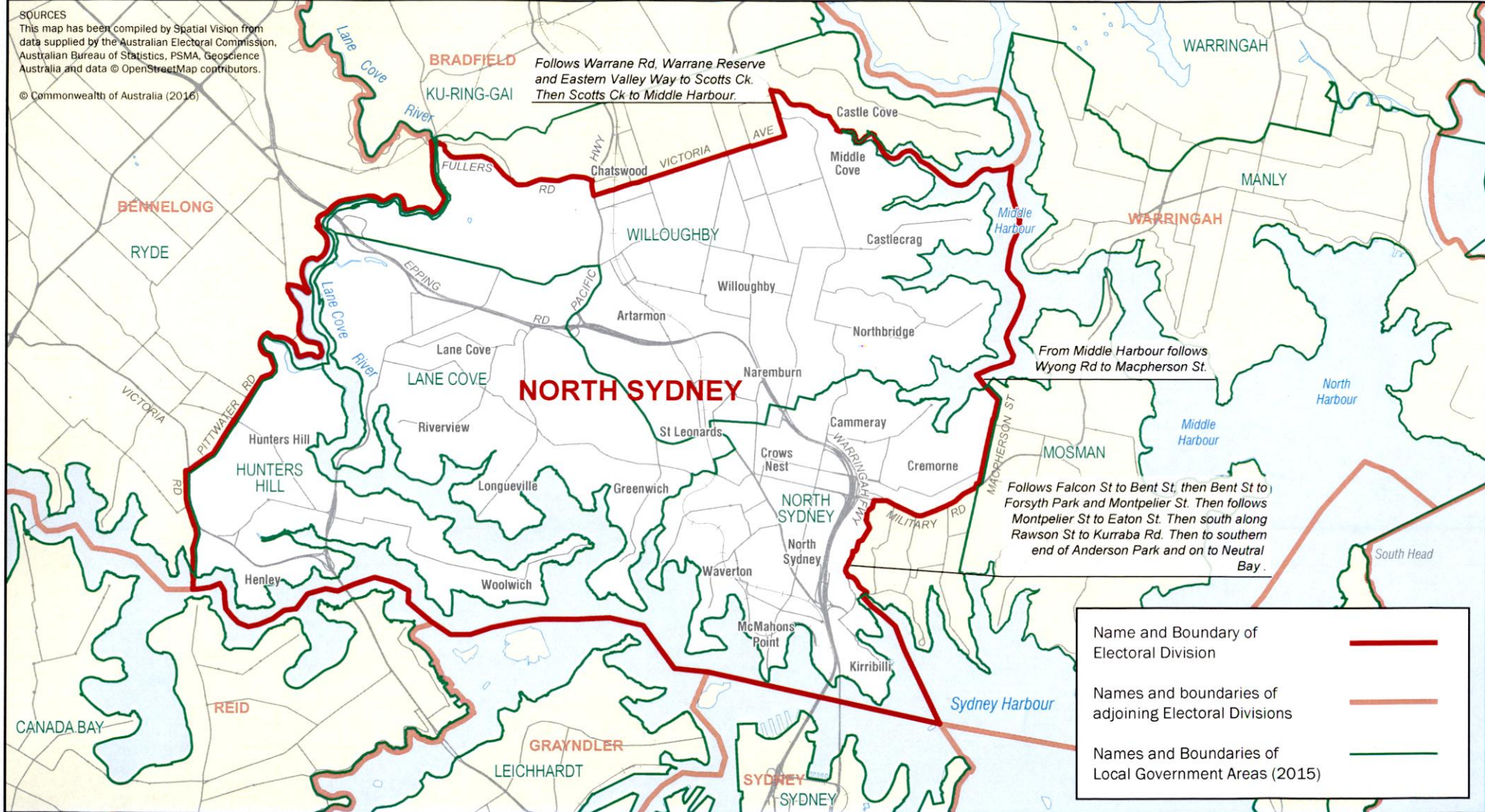




February 2016  
**MAP OF THE FEDERAL  
 ELECTORAL DIVISION OF  
 NORTH SYDNEY**



**SOURCES**  
 This map has been compiled by Spatial Vision from data supplied by the Australian Electoral Commission, Australian Bureau of Statistics, PSMA, Geoscience Australia and data © OpenStreetMap contributors.  
 © Commonwealth of Australia (2016)

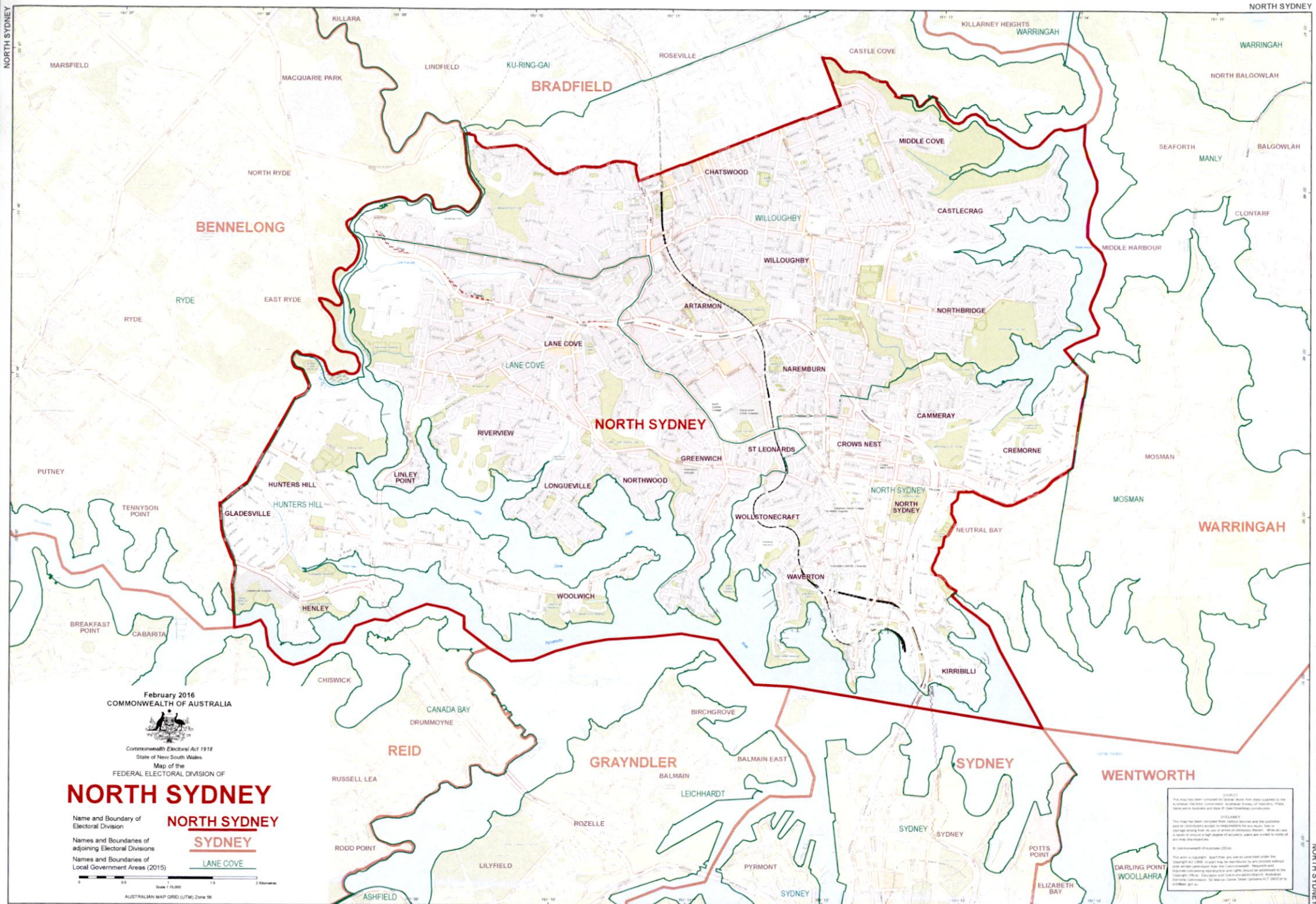


**BRADFIELD** Follows Warrane Rd, Warrane Reserve and Eastern Valley Way to Scotts Ck. Then Scotts Ck to Middle Harbour.

From Middle Harbour follows Wyong Rd to Macpherson St.

Follows Falcon St to Bent St, then Bent St to Forsyth Park and Montpelier St. Then follows Montpelier St to Eaton St. Then south along Rawson St to Kurraba Rd. Then to southern end of Anderson Park and on to Neutral Bay.

Name and Boundary of Electoral Division	
Names and boundaries of adjoining Electoral Divisions	
Names and Boundaries of Local Government Areas (2015)	



February 2016  
COMMONWEALTH OF AUSTRALIA



Commonwealth Electoral Act 1918  
State of New South Wales

Map of the  
FEDERAL ELECTORAL DIVISION OF

# NORTH SYDNEY

Name and Boundary of  
Electoral Division  
Names and Boundaries of  
adjoining Electoral Divisions  
Names and Boundaries of  
Local Government Areas (2015)

**NORTH SYDNEY**  
**SYDNEY**  
**LANE COVE**



SOURCES  
This map has been compiled from various sources and the publisher accepts no responsibility for any errors or omissions. It is not to be used for navigation or other purposes. Reproduction of this map is prohibited without the written permission of the publisher. Copyright © 2015 by the Commonwealth of Australia. All rights reserved.